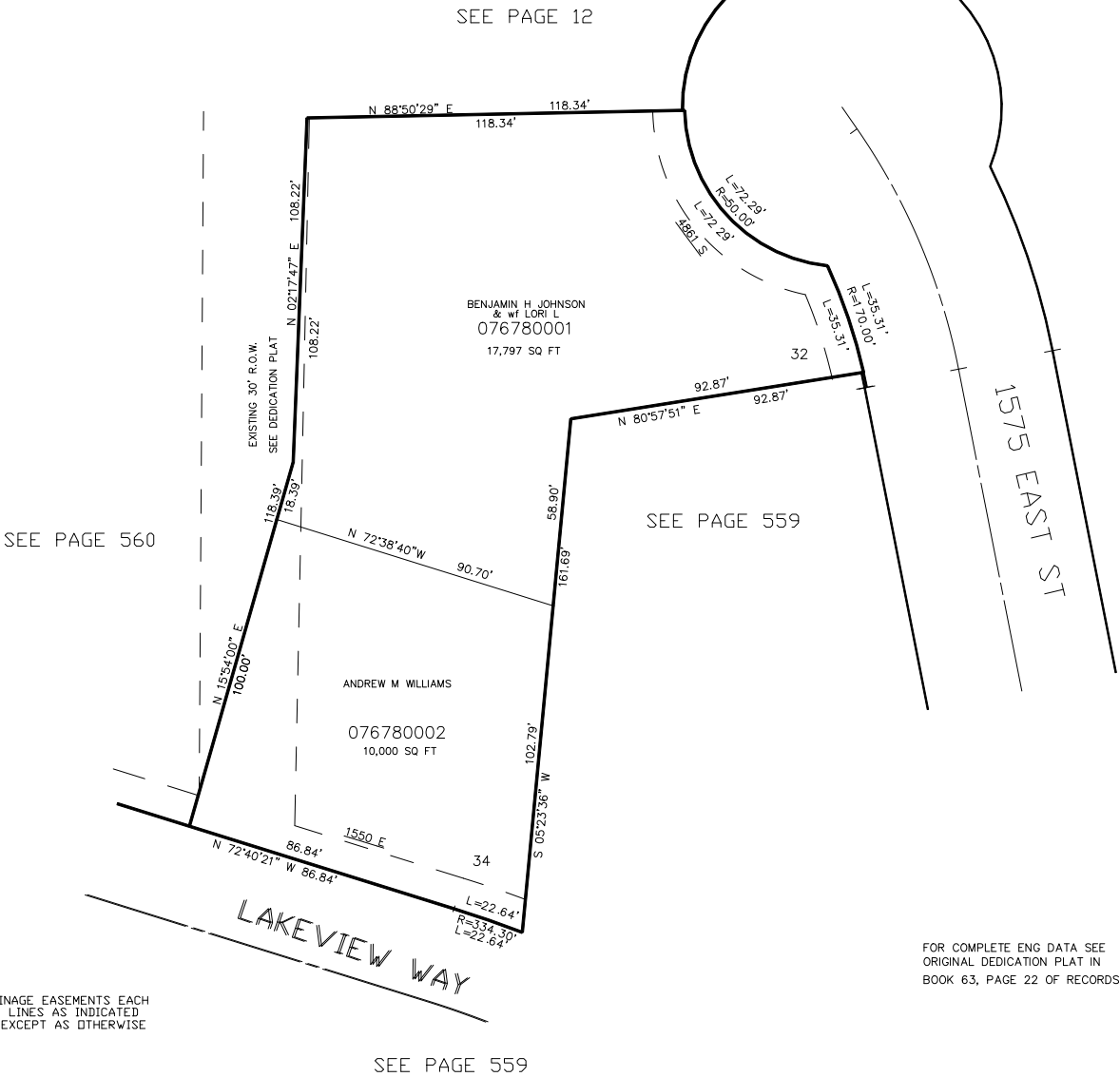


PART OF THE N.1/2, OF SECTION 15, T.5N., R.1W., S.L.B. & M.
THE POINTE AT STONE MOUNTAIN PHASE 3B
LOTS 32 AND 34
IN OGDEN CITY
SCALE 1" = 60'

TAXING UNIT: 25



10' UTILITY & DRAINAGE EASEMENTS EACH
SIDE OF PROPERTY LINES AS INDICATED
BY DASHED LINES EXCEPT AS OTHERWISE
SHOWN.